

VISIONING WORKSHOP



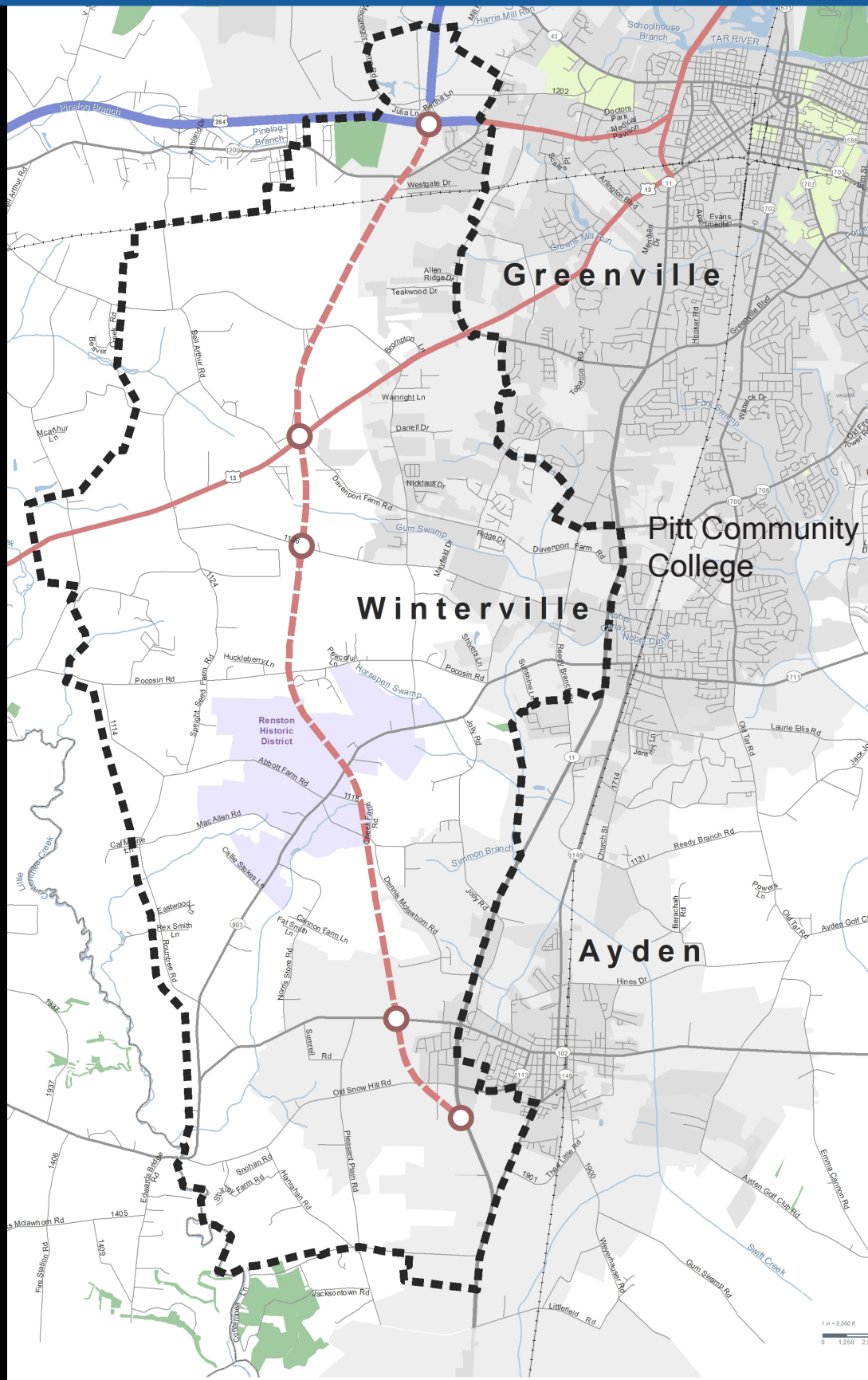
STEWART

Southwest Bypass Land Use Plan

Pitt County invites you to provide input for the Southwest Bypass Land Use Plan to help guide land use, development, and infrastructure decisions along the corridor.

Take the survey and attend the open house-style workshop on Monday, April 9, 2018 (4:00 pm - 7:00 pm) at the Pitt Community College Goess Student Center

Stop in any time to participate in activities designed to review trends, generate ideas, and to ask questions of facilitators and county staff. Light refreshments will be served.



WAYS TO GET INVOLVED

Take the survey

www.pittcountync.gov/SURVEY

Attend the Public Workshop

April 9th, 2018 from 4:00-7:00 pm

Goess Student Center
Pitt Community College
169 Bulldog Run, Winterville, NC 28590

Visit project website

www.pittcountync.gov/SWBypassPlan

Share opinions

Eric Gooby, Pitt County, AICP, Senior Planner
(252) 902-3250/Eric.gooby@pittcountync.gov

Jake Petrosky, Stewart, AICP Project Manager
(919) 866-4812/jpetrosky@stewartinc.com