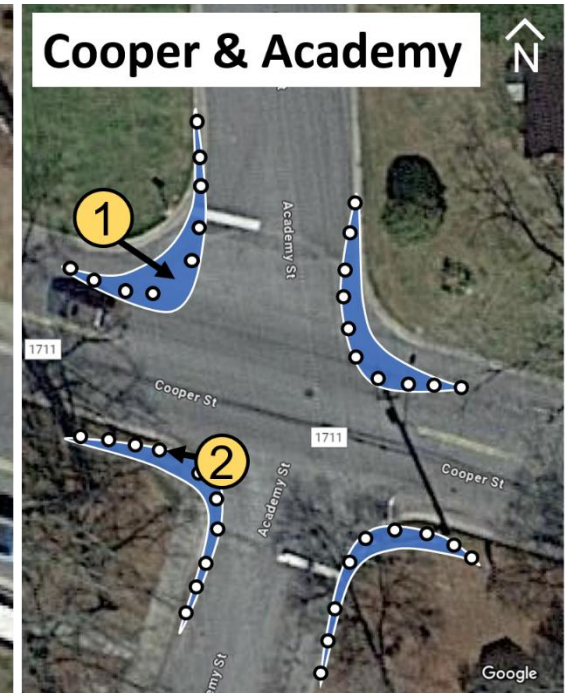


Main & Church



Cooper & Church



Cooper & Academy

1. **Curb extensions** will be created using blue acrylic asphalt paint and delineated using special heavy-duty traffic tape.
2. **Flexible delineator posts** will be used to visually and physically separate extensions.
3. No curb extensions will be installed at two corners of Main & Church in order to allow emergency vehicles to still easily access the fire station.
4. **High-visibility crosswalks** will be installed at several locations to connect existing sidewalk infrastructure. These will be created out of heavy-duty traffic tape.